

Autoblow®

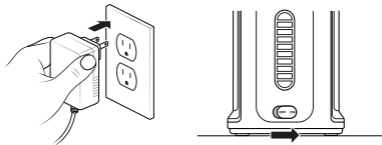


INTERNET USAGE GUIDE

HOW TO CONNECT YOUR AUTOBLOW AI TO YOUR WIFI NETWORK

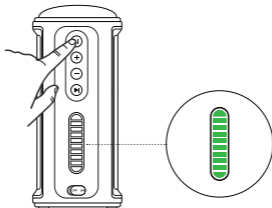
STEP 1

Plug the machine into the wall outlet and turn it on.



STEP 2

Press the **⏸** button and hold it for 5 seconds. Release the button when all of the LEDs turn GREEN.



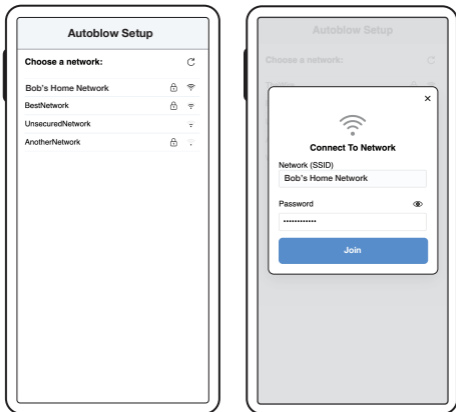
STEP 3

Use your smartphone to open the available wifi networks. Join the network called “AB_NETWORK”. The password is 123456789.



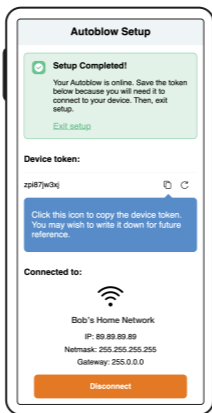
STEP 4

The Autoblow Setup page should now appear on your phone. Choose your preferred wifi network, enter the password, and then tap JOIN.



i If this setup page does not appear, while connected to the AB_NETWORK, use your browser and navigate to <http://10.10.0.1>.

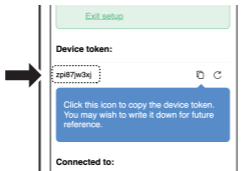
After tapping the Join button, provided you have entered the correct password, you will see the following screen:



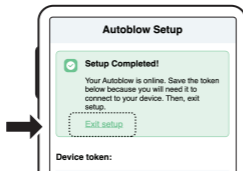
i You will only need to complete this step one time for any wifi network, unless you change your wifi password. The device will remember only the most recently connected network credentials.

STEP 5

You must now copy your device token from this screen before progressing. You may also wish to write it down for future reference.

**STEP 6**

Tap “Exit setup” to exit the setup mode.



i TIPS & TROUBLESHOOTING

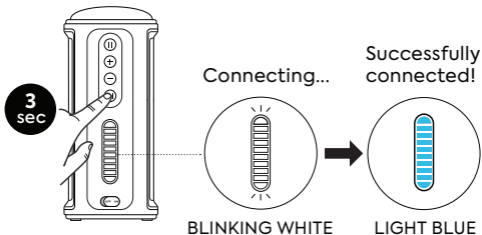
- If your network doesn't appear during step 5, make sure you are close to your router and make sure you have a 2.4ghz network available.
- Can't connect to your network and you are close to the router and it's a 2.4ghz network? Check that your router is connected to the internet and (more common) make sure that you have entered your wifi network password correctly. Additionally, confirm there is not a captive portal active, for example on a network like a university, hotel, café, or co-working space. Finally, confirm that your network on the ISP level or router level does not use an aggressive firewall that blocks potentially adult domains from being accessed.
- If all else fails, turn the Autoblow off and then on again and re-start the setup process from step 1.

HOW TO USE THE INTERNET ENABLED FEATURES

- !** Your device starts up automatically in offline mode. You must complete the below steps only when you wish to use the online features.

STEP 1

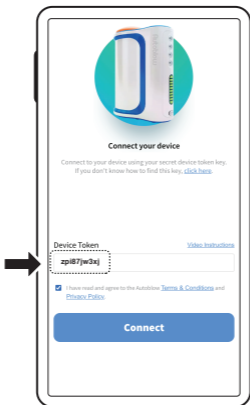
Hold the **▶** button for 3 seconds and release it when the LEDs quickly blink white. The Autoblow is connecting to your network. Once connected, the LEDs will turn a light blue color.



- i** Note that while you are in interactive mode, the device's buttons do not respond to being pressed other than for exiting interactive mode as described in step 4.

STEP 2

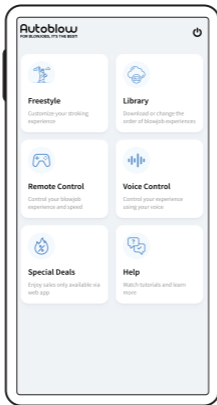
Use your phone's browser and navigate to app.autoblow.com. Paste your device token into the open field and tap **CONNECT**.



i For the best experience, use the most recent version of Safari or Chrome browser.

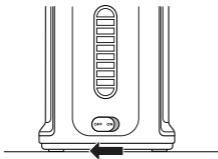
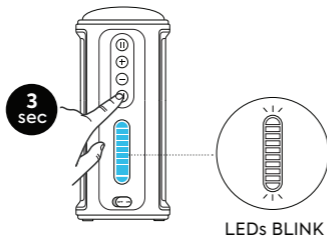
STEP 3

You will now see the web app homepage. All available features appear here and you may begin using the internet features immediately.



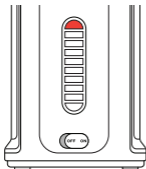
STEP 4

Should you wish to exit interactive mode, press and hold the PLAY button for 3 seconds until the LEDs blink, or, turn the device off and then on again.



i TIPS & TROUBLESHOOTING

- Some features may require minimum browser/OS versions. If your browser or OS is unsupported, a message will appear prompting you to upgrade.
- If at step 2, you see an error at the top of the screen saying “Error: Device is offline, you need to connect the device first” check that you are in the interactive mode, meaning you have followed Part 2 step 1 (connecting the device to your network).
- If you want to use a new network or you change your wifi password, follow the steps again in part 1, “HOW TO CONNECT YOUR AUTOBLOW AI TO YOUR WIFI NETWORK.”

**LED COLOR CODE**

1 RED LED ON

ERROR DESCRIPTION

Error name: Network Error

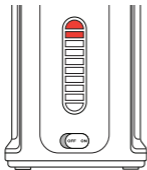
Your device can't connect to the wifi network or it can connect but the connection does not have internet.

RECOMMENDED SOLUTION

Make sure you have completed step 1 successfully.

This error can be caused by changing your network or network name or network password, but failing to complete Step 1 again.

If you receive this error while using your Autoblow in interactive mode, you may have a network reliability issue; move closer to your router or check whether your network is connected to the internet.

**LED COLOR CODE**

2 RED LEDs ON

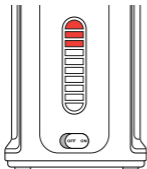
ERROR DESCRIPTION

Error name: Setup Error

Your device cannot enter the Internet set up mode for an unknown reason.

RECOMMENDED SOLUTION

Turn your device off and then on again and try again.

**LED COLOR CODE**

3 RED LEDs ON

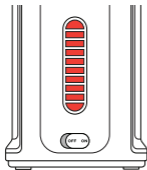
ERROR DESCRIPTION

Error name: Motor Stuck

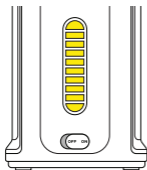
The motor is stuck unexpectedly.

RECOMMENDED SOLUTION

Remove the sleeve and turn your device off and then on again without the sleeve inside. Press play to see if the motor is now unstuck. If it is unstuck, re-insert your sleeve and use normally. If you get the same error repeatedly, contact support for further troubleshooting.

**LED COLOR CODE**

LEDs BLINK ALTERNATING
COLORS RED AND YELLOW

**ERROR DESCRIPTION**

Error name: Maximum Temperature

Your device's motor has reached its maximum operating temperature.

RECOMMENDED SOLUTION

Turn the device off and allow 10+ minutes for it to cool down before using again.